

DRAWWORKS

TSM 7000E (750 hp/560 kW)
 Eaton 324 WCD Auxiliary Brake
 Input: OEM Traction Motor (1050 hp/783 kW)

MAST

Mastco Telescopic Double
 Clear Height: 105 ft/32 m
 Static Hook Load:
 320,000 lbs/142 400 daN (8 lines)
 300,000 lbs/133 500 daN (6 lines)

Drill Line: 1 1/8"/28.6 mm

SUBSTRUCTURE

Mastco Step Down - Self Leveling
 Setback Capacity: 275,000 lbs/122 300 daN
 Casing Capacity: 320,000 lbs/142 400 daN
 Floor Height: 16'/4.88 m
 Clear Height: 14' 6"/4.42 m
 K.B. to Ground: 17' 5"/5.31 m
 (substructure heights include pontoons and rig matting)

MUD PUMP #1 (TRIPLEX)

BPMP-BSF-1000 (1000 hp/746 kW)
 Stroke: 10"/254 mm
 Input: OEM Traction Motor (1050 hp/783 kW)

MUD PUMP #2 (TRIPLEX)

BPMP-BSF-1000 (1000 hp/746 kW)
 Stroke: 10"/254 mm
 Input: Cat 3508E Low Speed (925 hp/690 kW)

MUD TANK

Total Volume: 2,690 ft³/76.19 m³/480 bbl
 Useable Volume: 2,074 ft³/58.74 m³/370 bbl
 Pill Tank Volume: 90 ft³/2.54 m³/16 bbl
 Trip Tank Volume: 72 ft³/2.04 m³/13 bbl
 (2) Derrick Hi 8 3 Panel Shakers
 (2) 5x6 Mixing Pumps (rigged for 3)
 Degasser and lines

LIGHT PLANTS

Electrical Power Distribution:
 Dual AC Diesel Generator with 110-208-600 volts
 #1 Input: CAT 3508 (1050 kW)
 #2 Input: CAT 3508 (1050 kW)
 #3 Input: CAT 3306 (210 kW)

WELL CONTROL

BOP's 11"/279.4 mm x 3,000 psi/21 000 kPa NACE
 Annular-Blind-HCR-Pipe-Rotating Spool
 Spools: (1) 11" x 9" x 2/3,000 psi (1) 11" x 11" x 2/3,000 psi
 Accumulator: Oilco 88 gallon 5 Station with Electric PLC Control
 Choke Type: (2) Willis 2 1/16" 5,000 psi

HOISTING AND ROTATING EQUIPMENT

Ideal 542E200 Block & Hook Capacity: 200 ton/178 000 daN
 National N-47 Swivel Capacity: 200 ton/178 000 daN
 Bajo ZP175 17 1/2" Rotary Table Capacity: 250 ton/222 400 daN

WINTERIZATION

2 Pass Saskatoon Boiler (125 hp) with Steam Lines
 Prefabs Rig Shelter

TUBULARS

Various configurations of drill pipe and BHA's
 available to suit operator's program requirements

SPECIAL EQUIPMENT

Hydraulic Pipe Table and 5 Standard Pipe Tables
 Hydraulic Catwalk with Skate
 Ability to displace with water tank and mud pump
 16" Conductor with Air Union
 4" water line in catwalk for cementers
 2' Pony Sub if required
 Manifold and all lines NACE trim
 Pipe Spinner and Kelly Spinner
 Rig is presently equipped with a 175 ton electric CanRig Top Drive
 (not part of the rig inventory)
 Rig Manager Wellsite Trailer
 Loader available at extra cost
 (not included in rig loads)

MISCELLANEOUS

Fuel Tank Capacity: 4,750 gal/18 000 L
 Water Tank Capacity: 24,800 gal/94 000 L
 Summer Loads: 20
 Winter Loads: 21

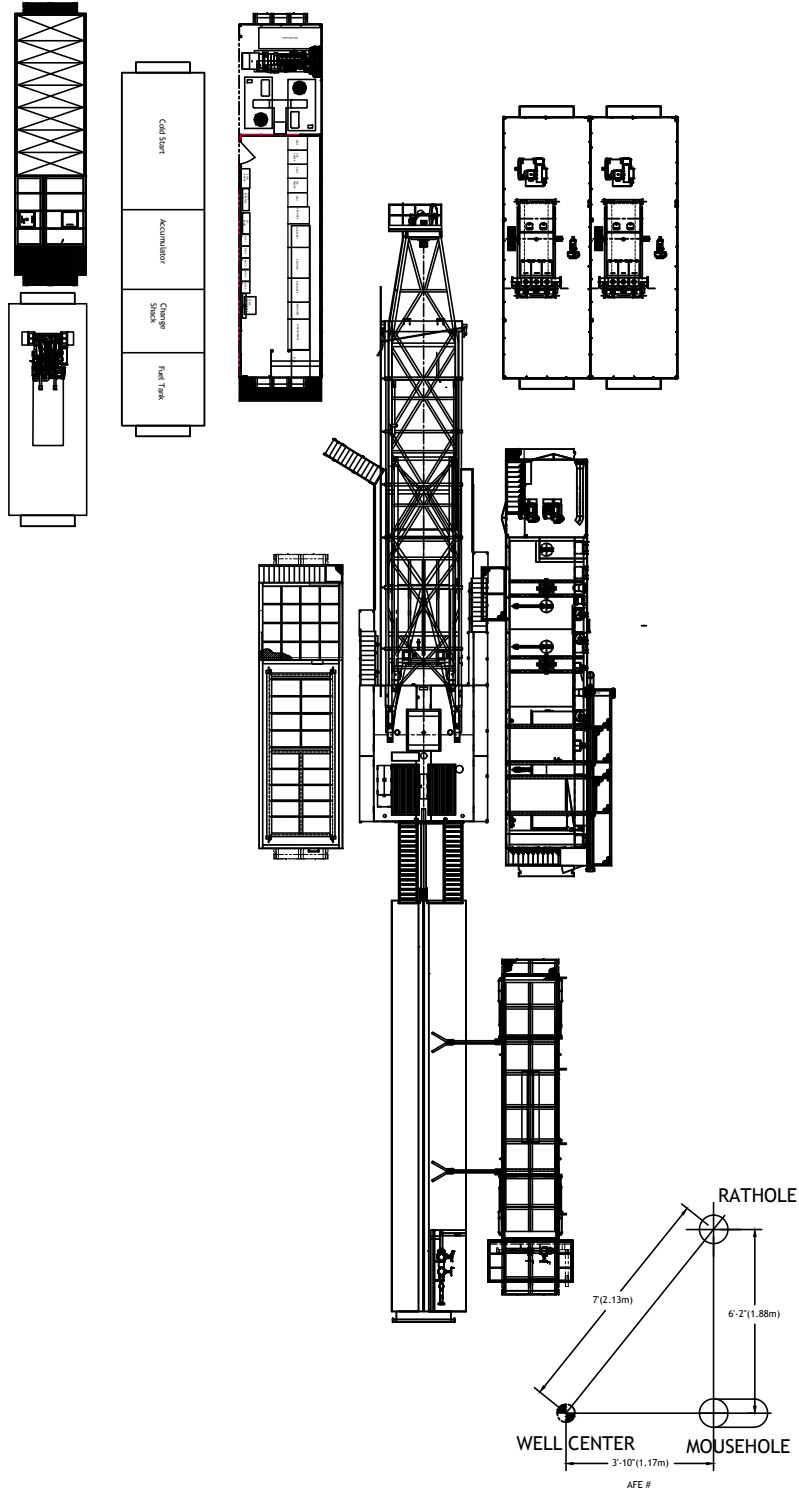
TYPICAL LEASE

66 m x 86.8 m/218 ft x 285 ft



Savanna Drilling

RIG 614E
3200 m/10,500 ft



△	02/09/11	UPDATED TITLEBLOCK	CAA		
REV#	DATE	DESCRIPTION	REVD BY	CHKD BY	AUTHD BY
THE INFORMATION INCLUDED IN THIS DOCUMENT IS PROPRIETARY AND SHALL NOT BE REPRODUCED, TRANSFERRED OR DISCLOSED TO OTHERS, FOR ANY PURPOSE WHATSOEVER, WITHOUT THE WRITTEN AUTHORIZATION OF SAVANNA ENERGY SERVICES CORP.					



SAVANNA ENERGY SERVICES CORP.
 SUITE 1800, 311-6TH AVENUE SW
 CALGARY, ALBERTA T2P 3H2
 P • 403-503-9990 F • 403-503-0654
 WWW.SAVANNAENERGY.COM

SCALE:	TITLE:	Rig Layout (3200 m/10,500 ft)			
1/8" = 1'-0"	DRAWN BY:	NLM	CHKD BY:	AUTHD BY:	
TITLEBLOCK:	CUSTOMER:	DRILLING	RIG:	614	
DWG #:	DATE:	02/03/09	REV #:	1	
T96	DWG #:	SY101L614LO	REV #:	1	